

# CAMPAIGN COLLATERAL



## REQUEST THE FOLLOWING ON GSOBT'S PARTNER WEBSITE

- Staff buttons, 2" x 2", pin back
- Key card holder inserts, 3.5" x 2"
- Static clings with QR code, 4" x 3"
- Refrigerator magnets, 4.5" x 3.25"
- Beach Safe brochures, 4" x 9", folded
- Posters, 12" x 18"
- Double red flag static clings, 8" x 12"  
For display only when double red flags are flying  
Apply to beach exit doors
- Double red flag sidewalk signs, 24" x 36"  
For display only when double red flags are flying



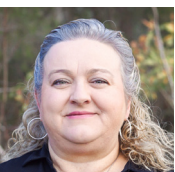
## DOWNLOAD THE FOLLOWING FROM THE BEACH SAFE ASSET PORTAL

- Campaign messaging
- QR codes
- Rip current sign art
- Beach flag graphics
- Printable signs and posters
- Rip current video
- Social media graphics
- Suggested pre-arrival and confirmation email copy



## REQUEST CUSTOMIZED ART FOR KID'S ACTIVITY SHEET

Ashley Lutz  
ALutz@GulfShoresAL.gov · 251-968-4213



## QUESTIONS?

Contact Kim Jones, Community Liaison  
KJones@AlabamaBeaches.com · 251-228-2629

